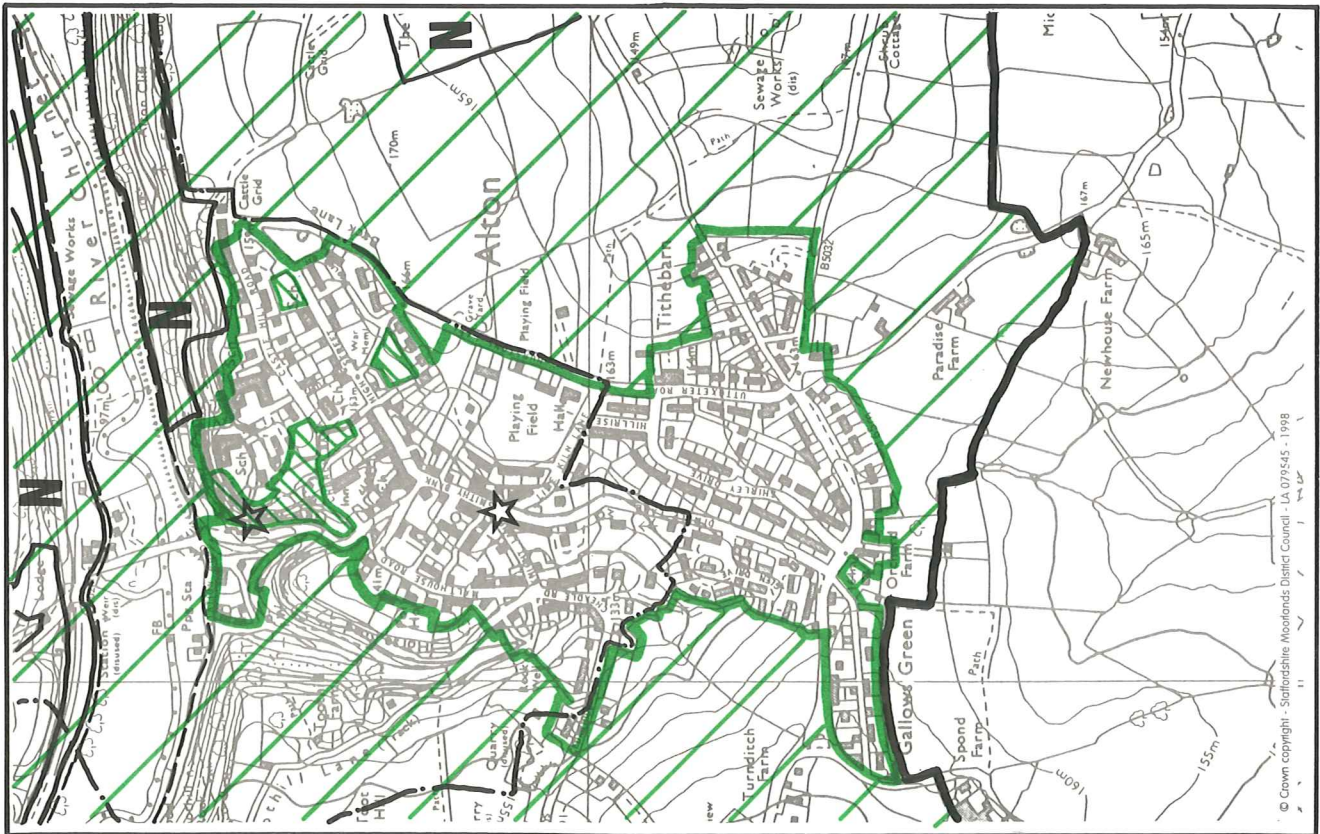


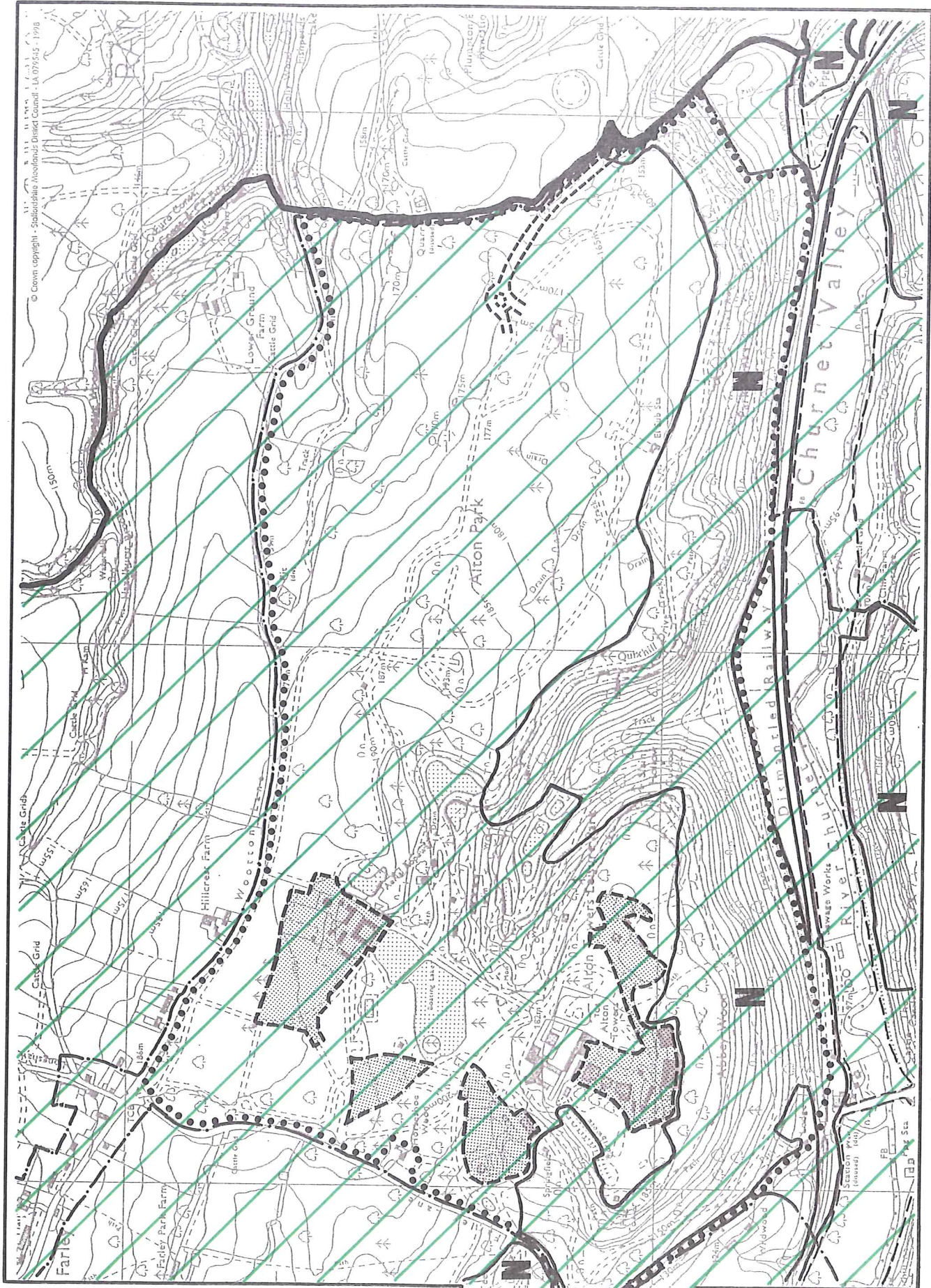
Inset Plans



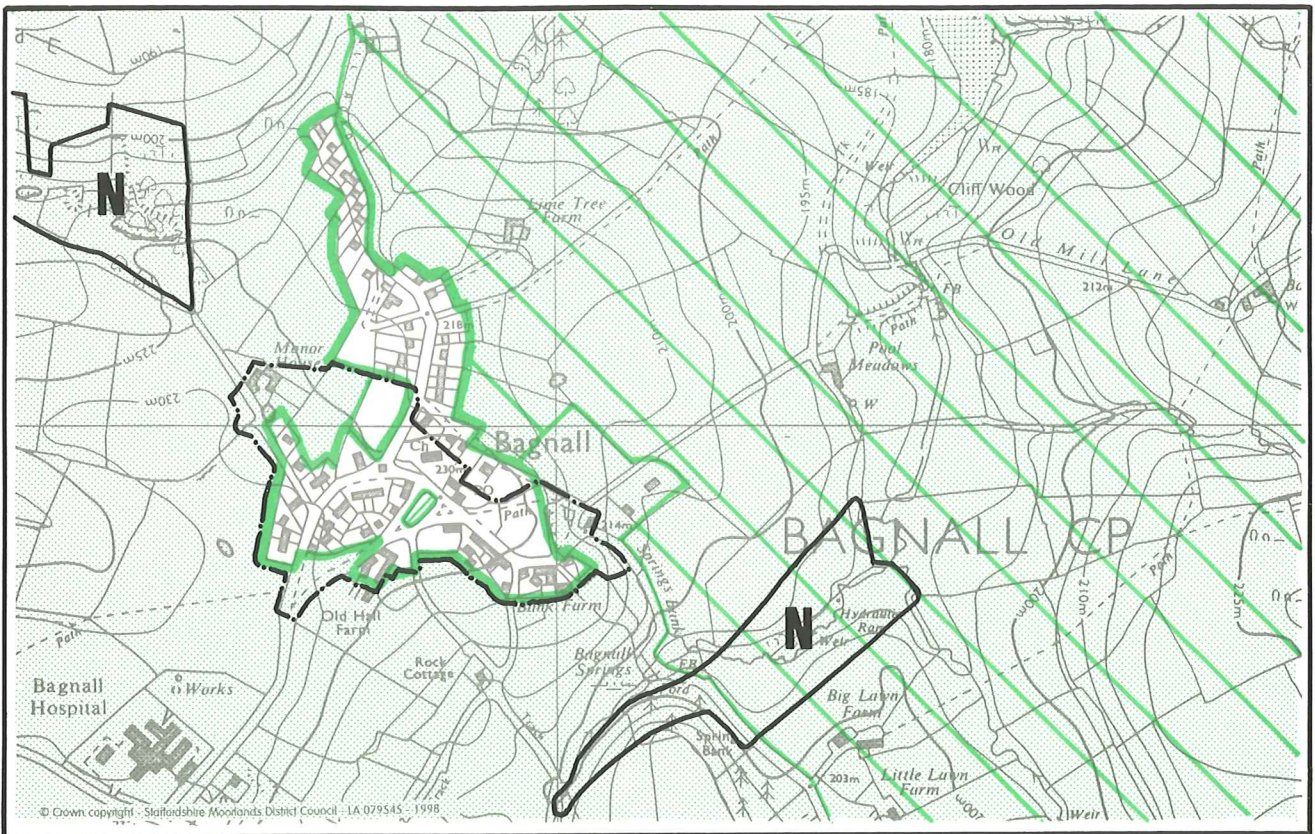
© Crown copyright - Staffordshire Moorlands District Council - LA.079545 - 1998

Alton

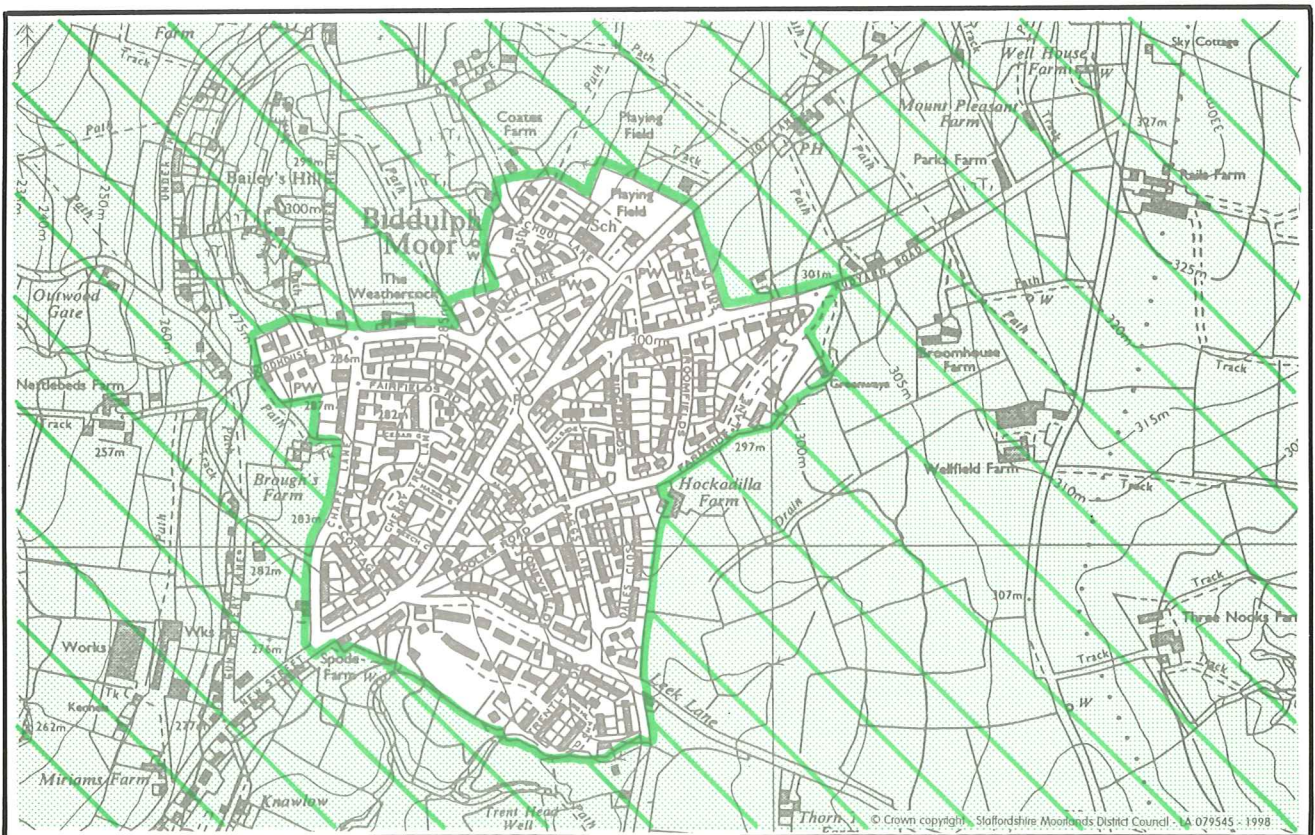
© Crown copyright - Staffordshire Moorlands District Council - LA 079503 - 1998



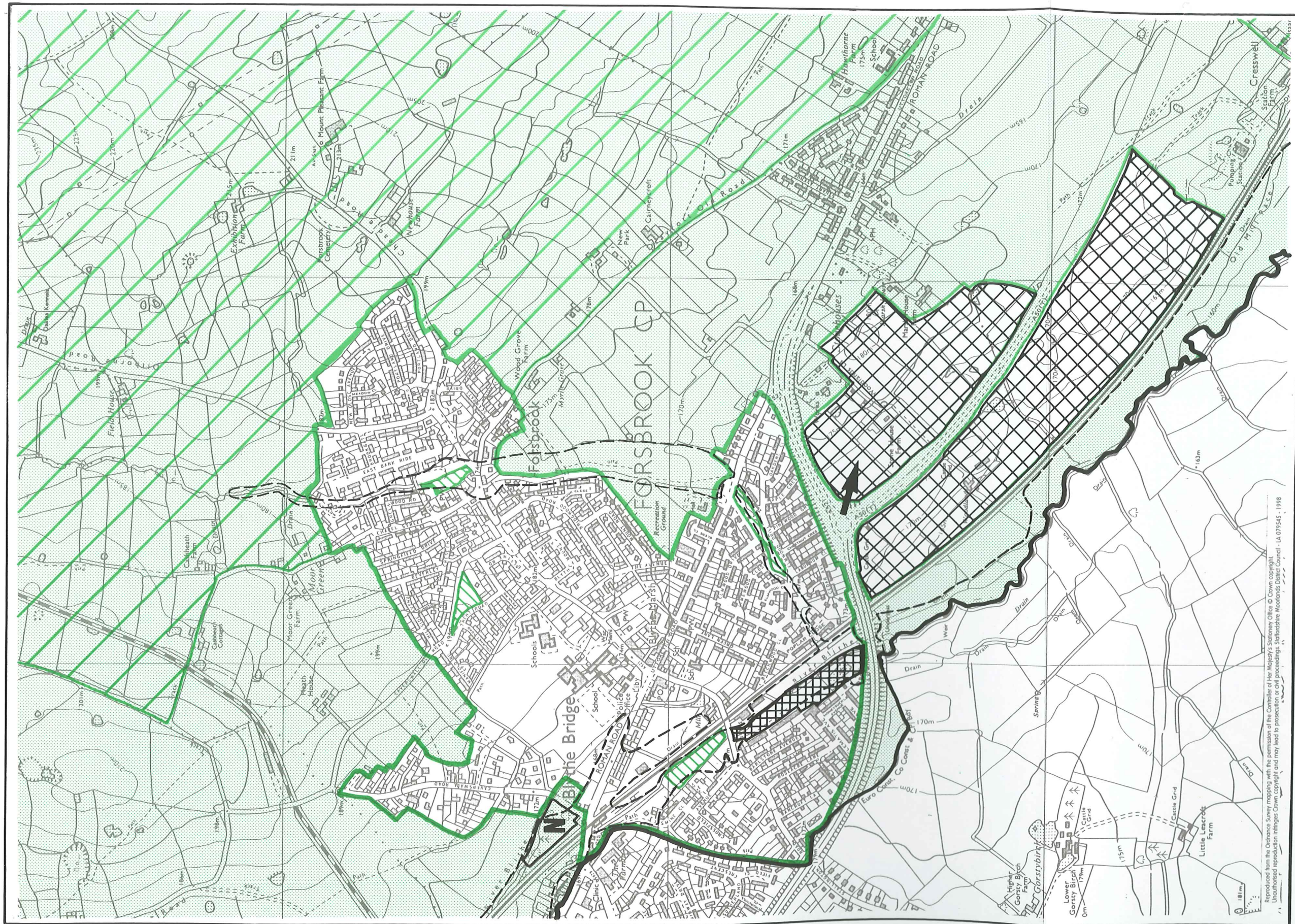
Alton Towers →



Bagnall



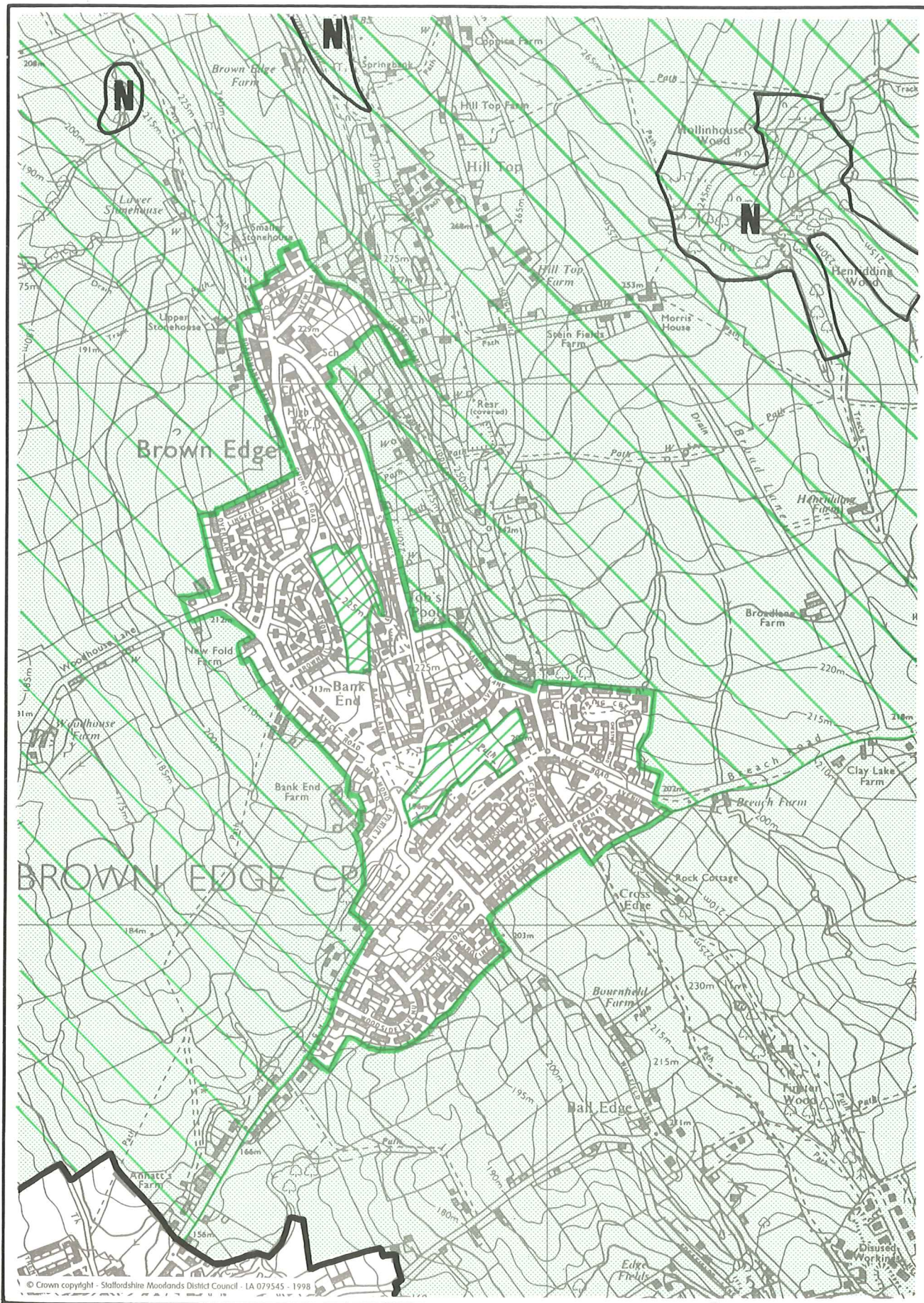
Biddulph Moor



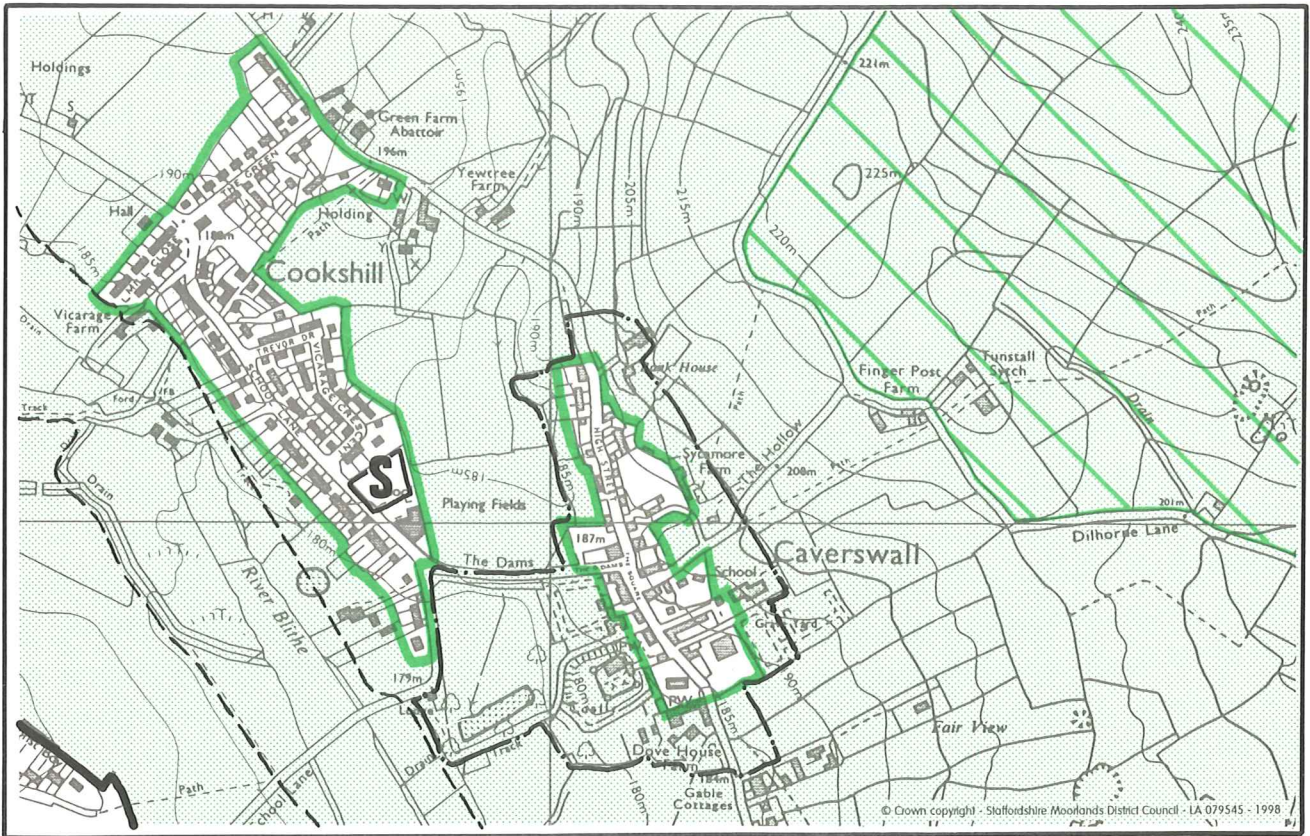
Reproduced from the Ordnance Survey mapping with the permission of the Controller of Her Majesty's Stationery Office © Crown copyright.
 Unauthorised reproduction infringes Crown copyright and may lead to prosecution or civil proceedings. Staffordshire Moorlands District Council - LA 079545 - 1998

Blythe Bridge and Forsbrook

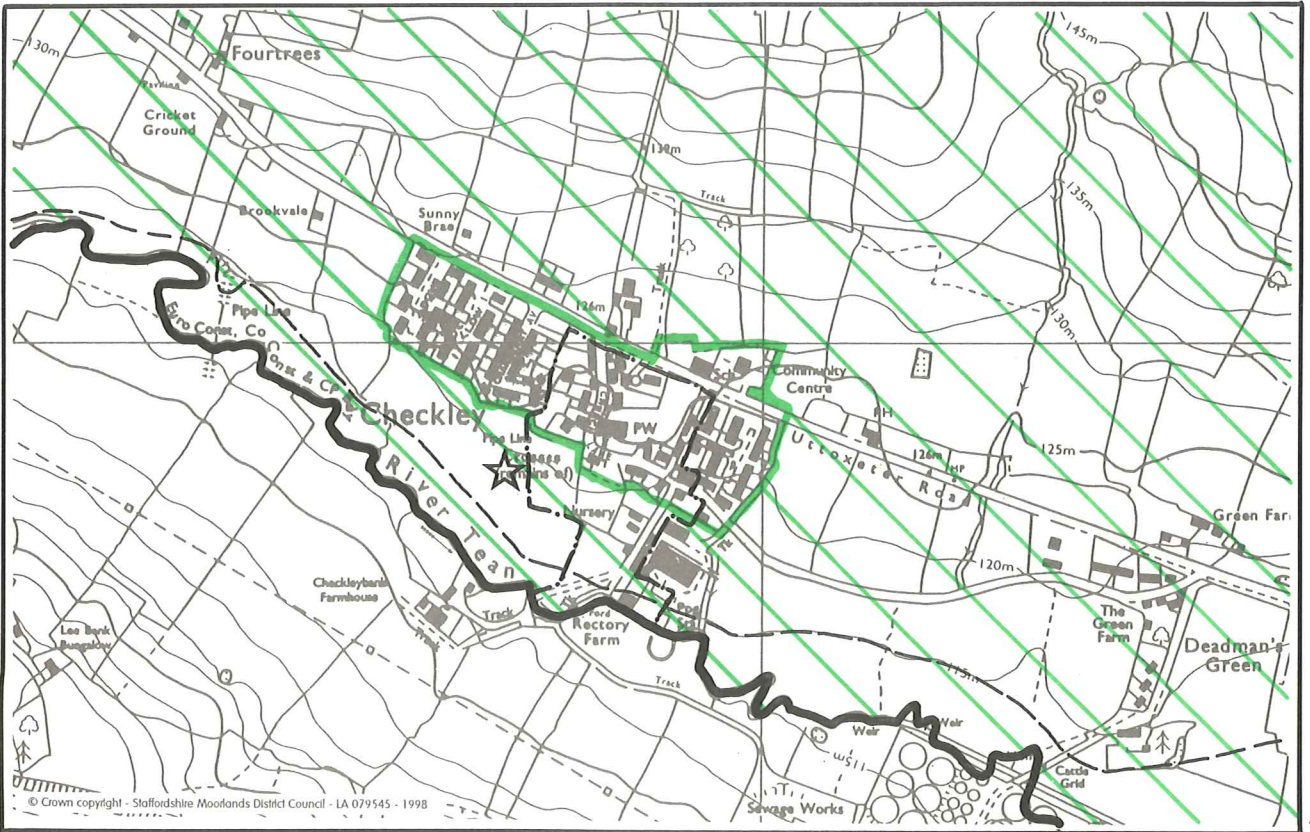




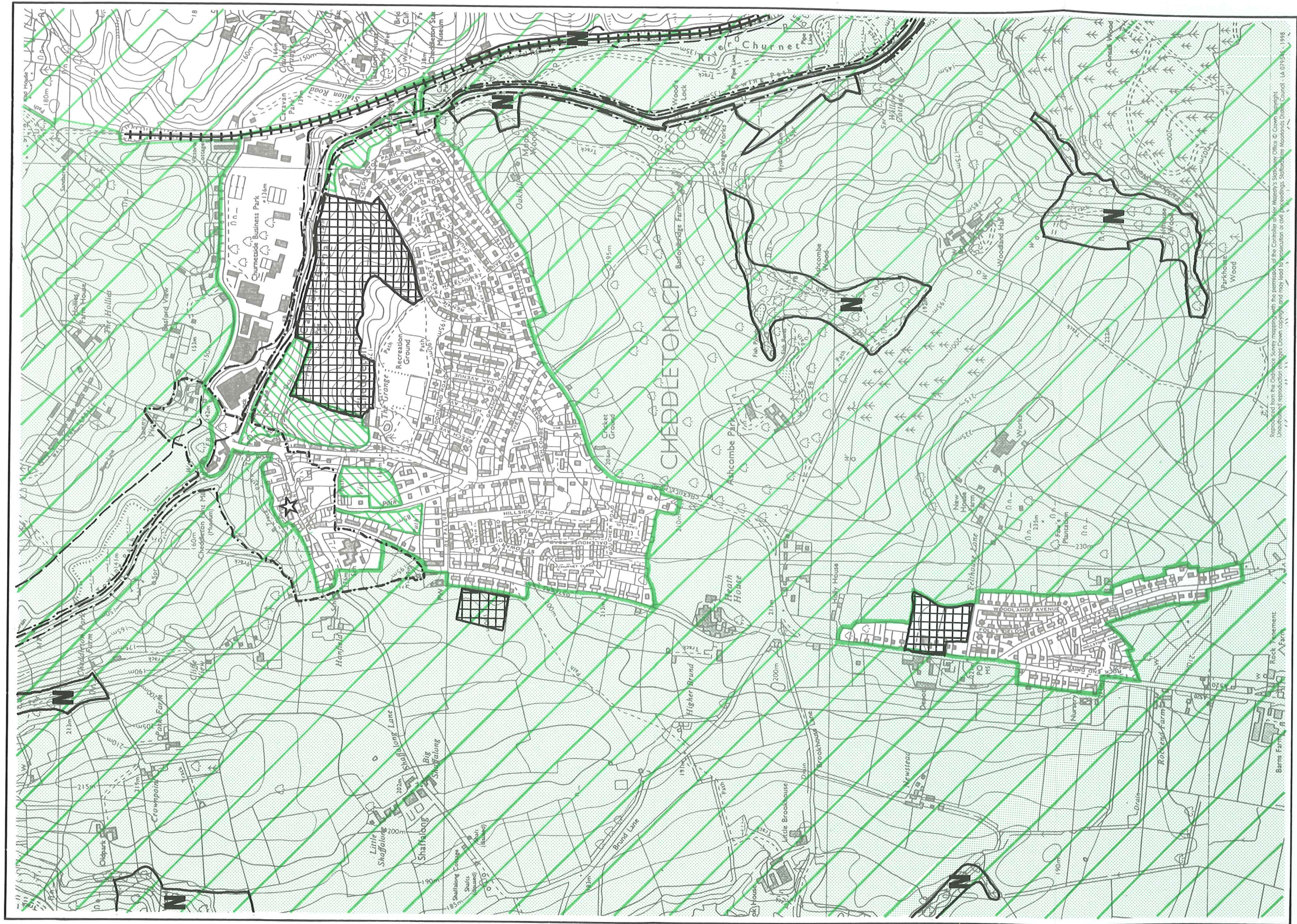
Brown Edge



Caverswall and Cookshill



Checkley

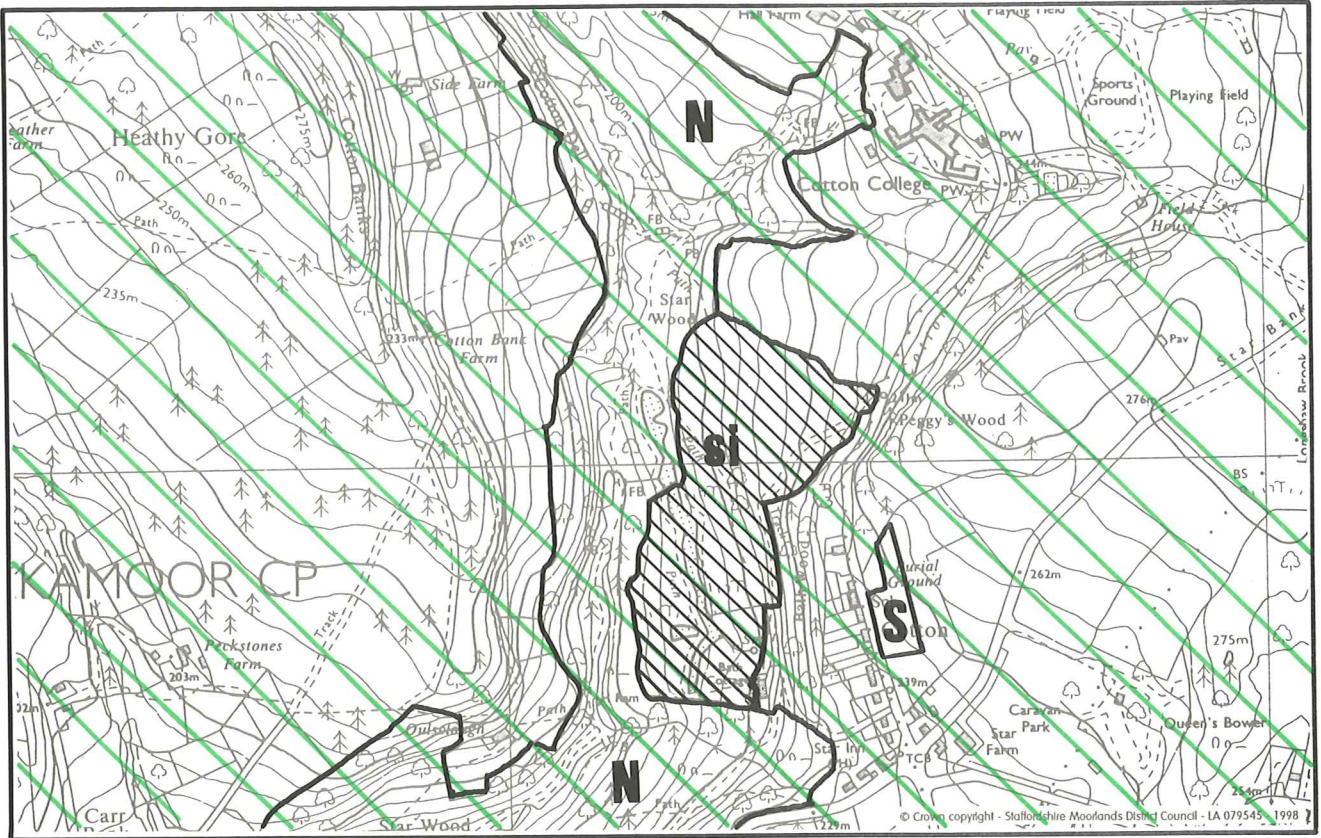


Reproduced from the Cheddleton Sewer Mapping with the permission of the Controller of Her Majesty's Stationery Office © Crown Copyright. Unauthorised reproduction of this Crown copyright, and may lead to prosecution or civil proceedings. Author: The Moorlands District Council - LA 0793-4 - 1998.

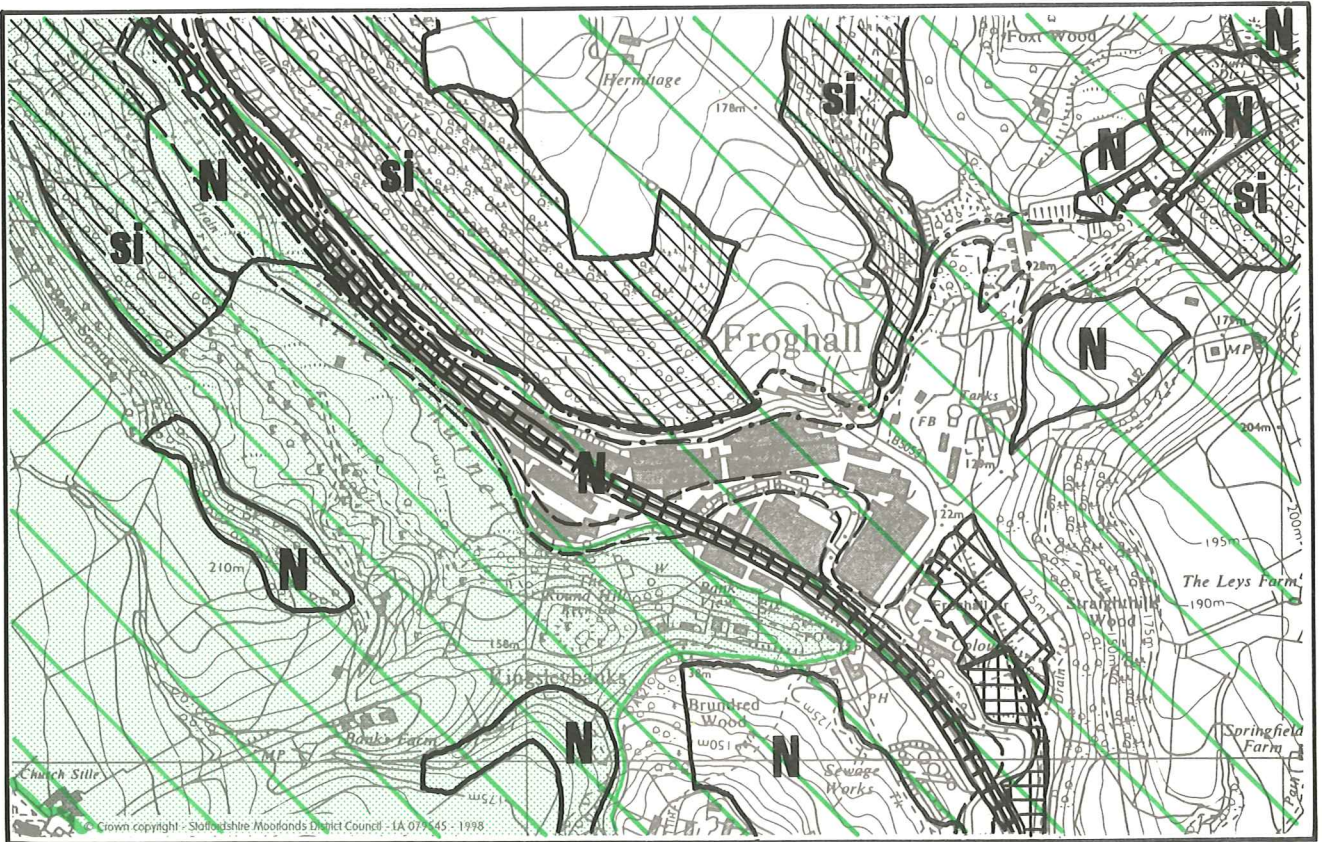
Cheddleton

STAFFORDSHIRE MOORLANDS LOCAL PLAN
Adopted - September 1998

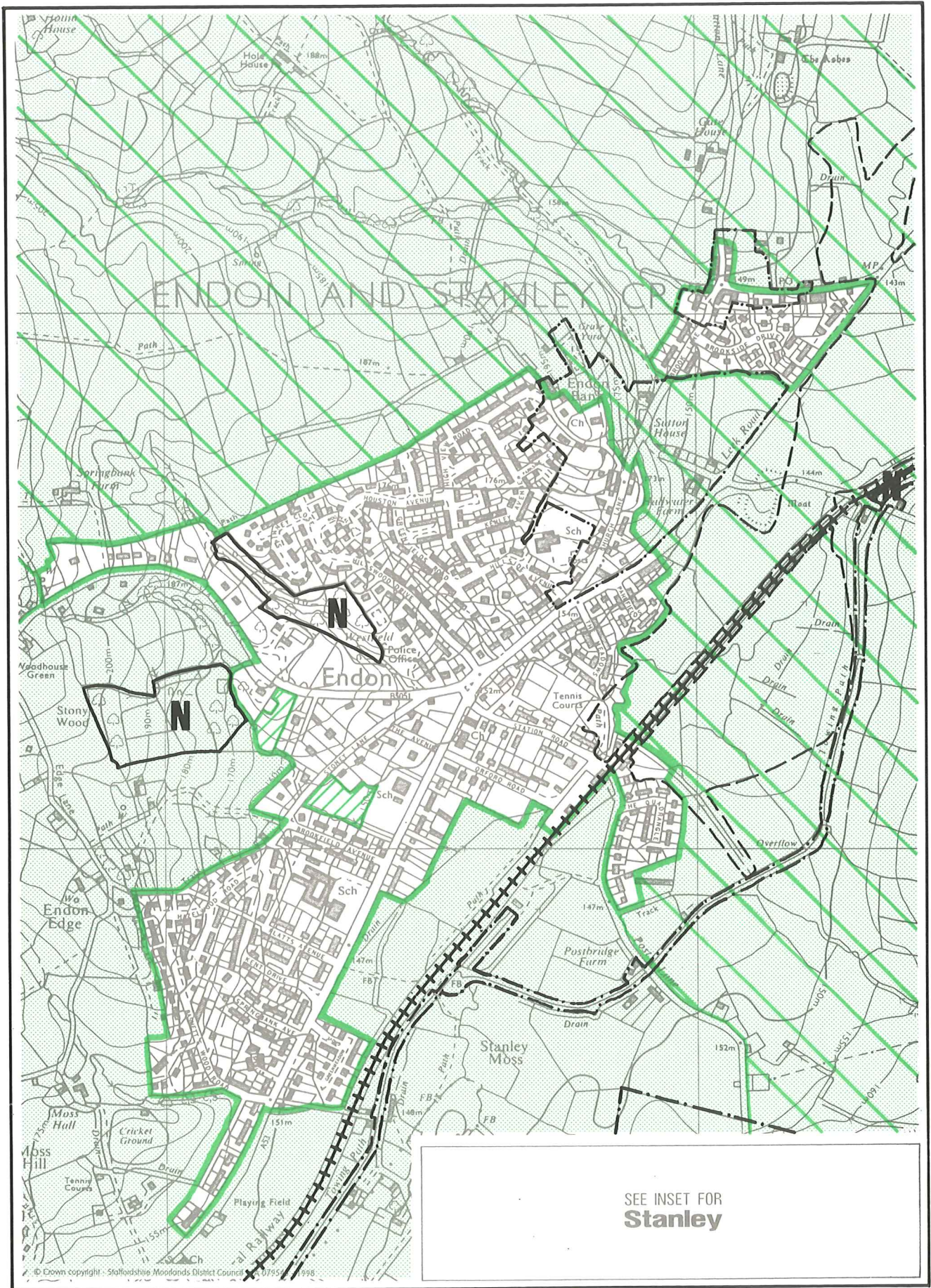




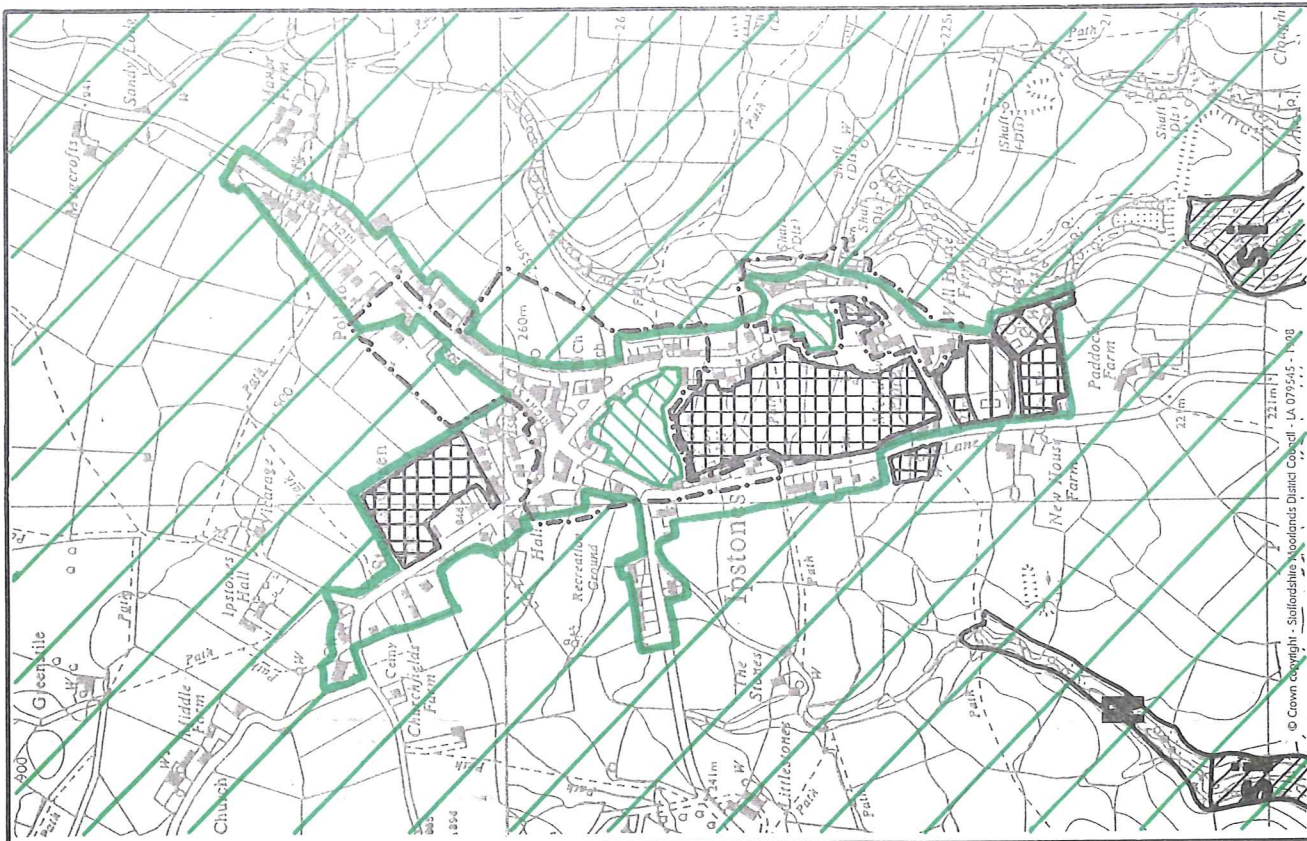
Cotton



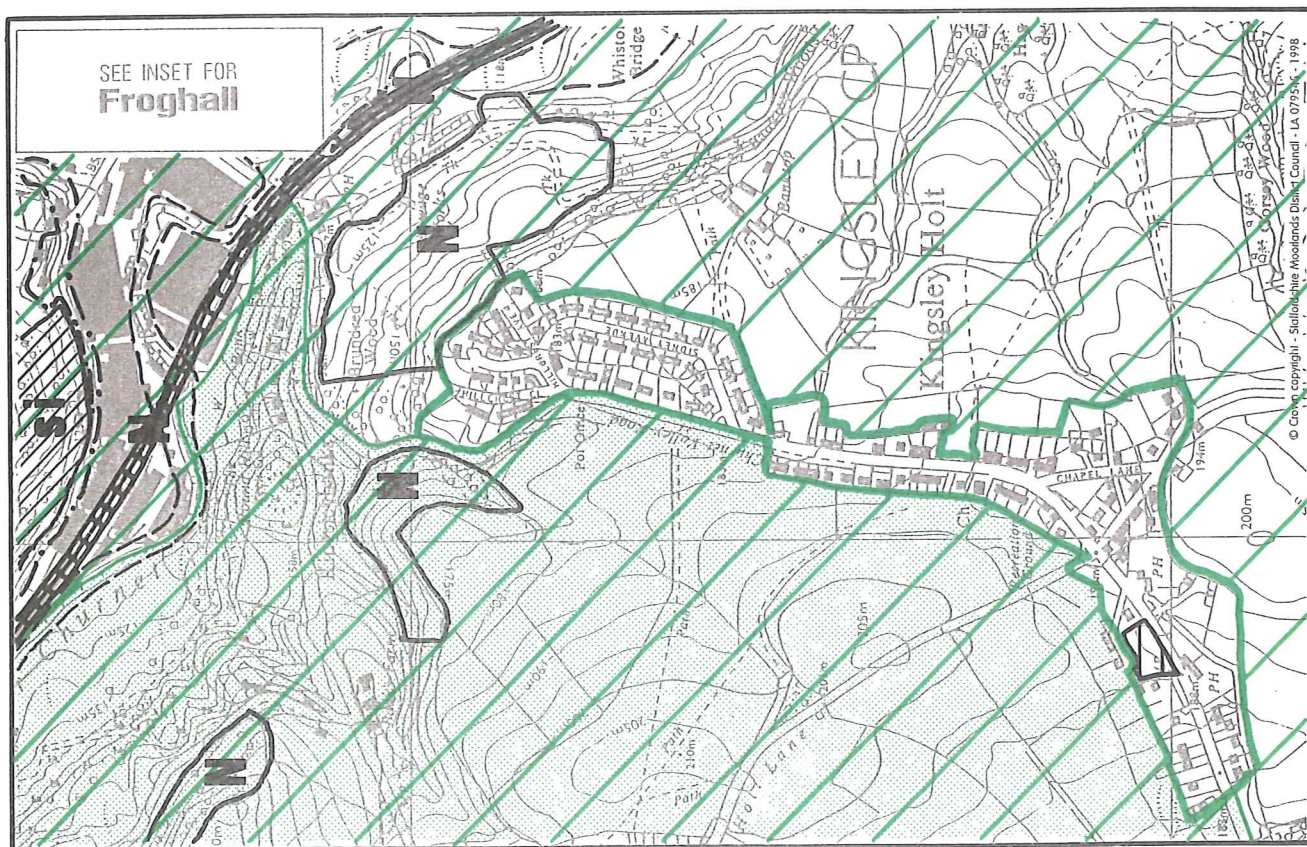
Froghall



Endon



Ipstones

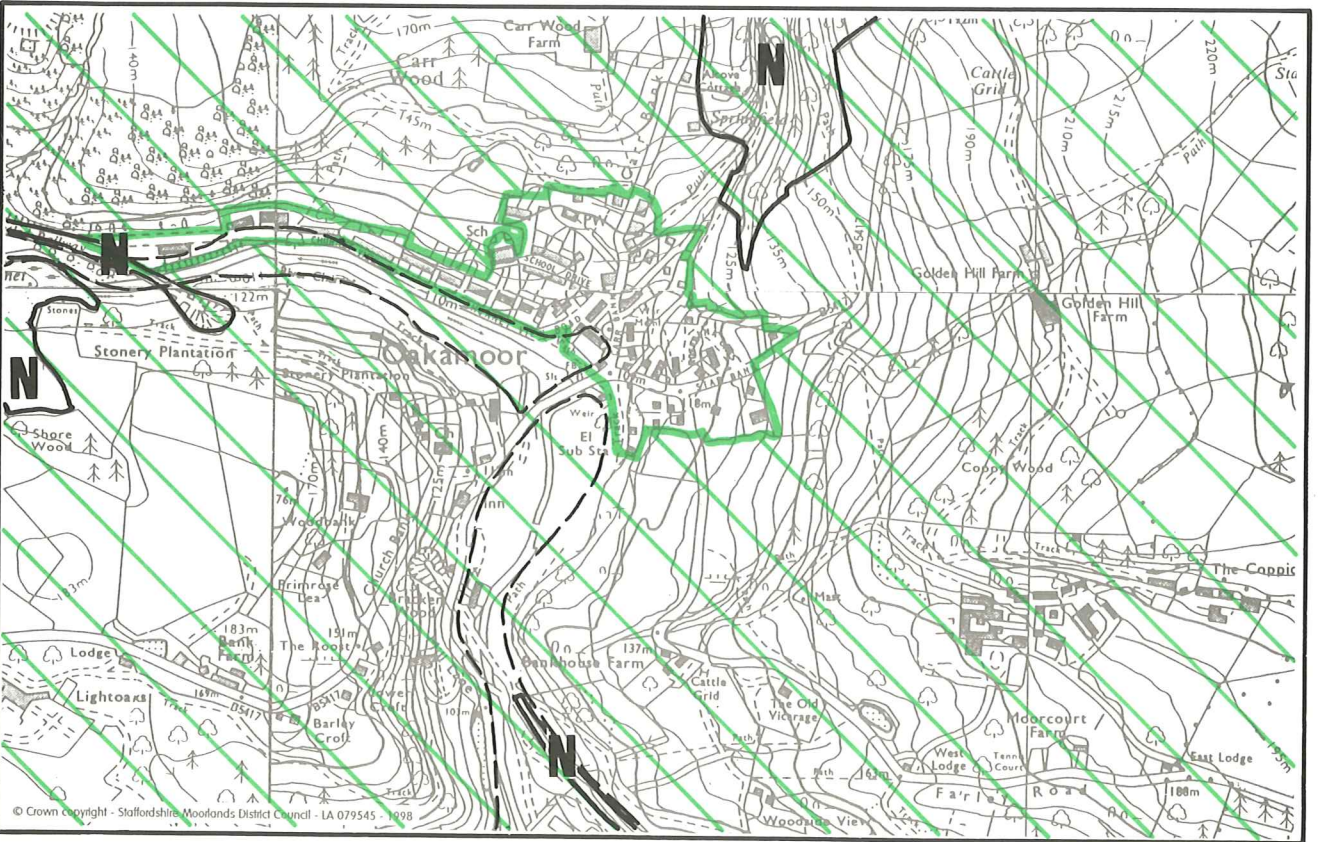


Kingsley Holt

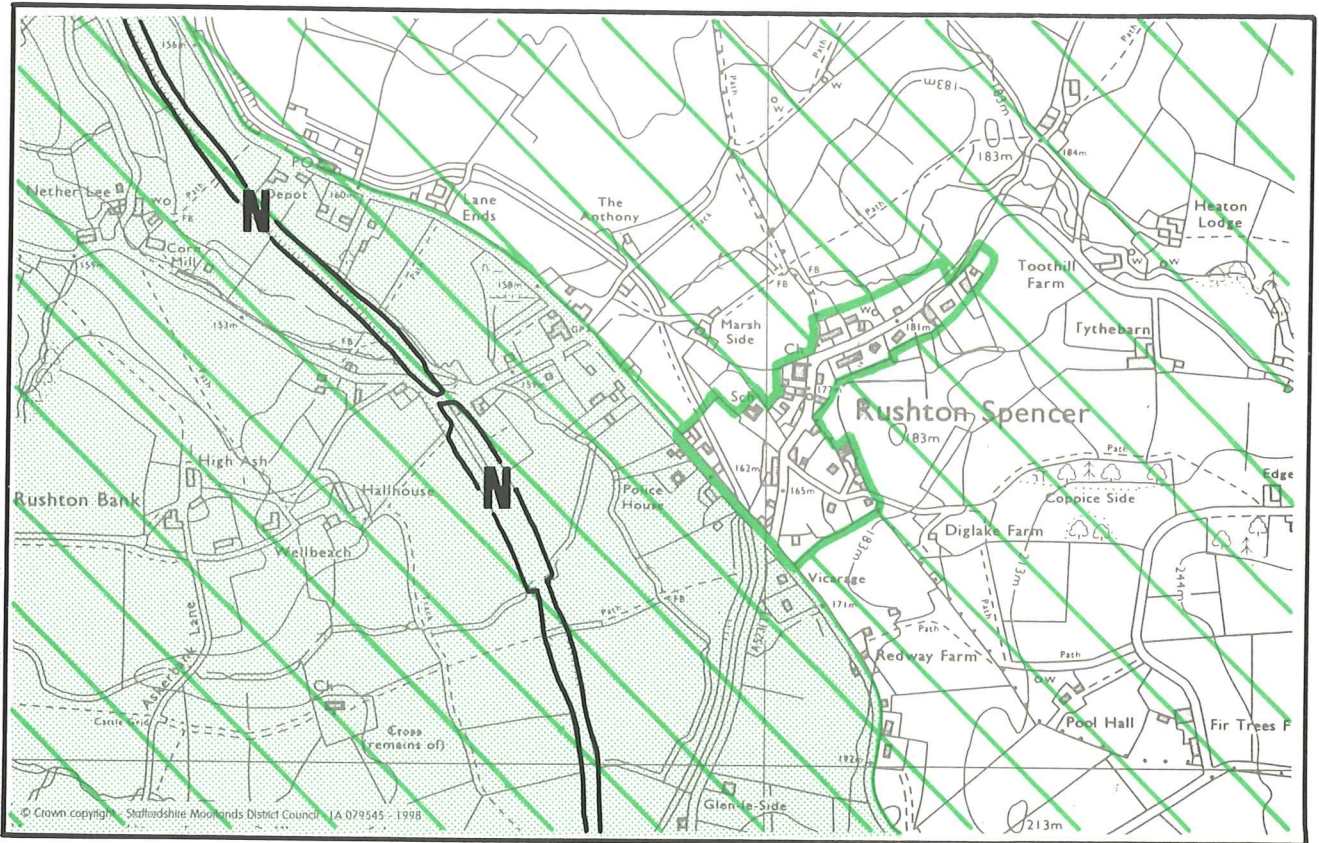




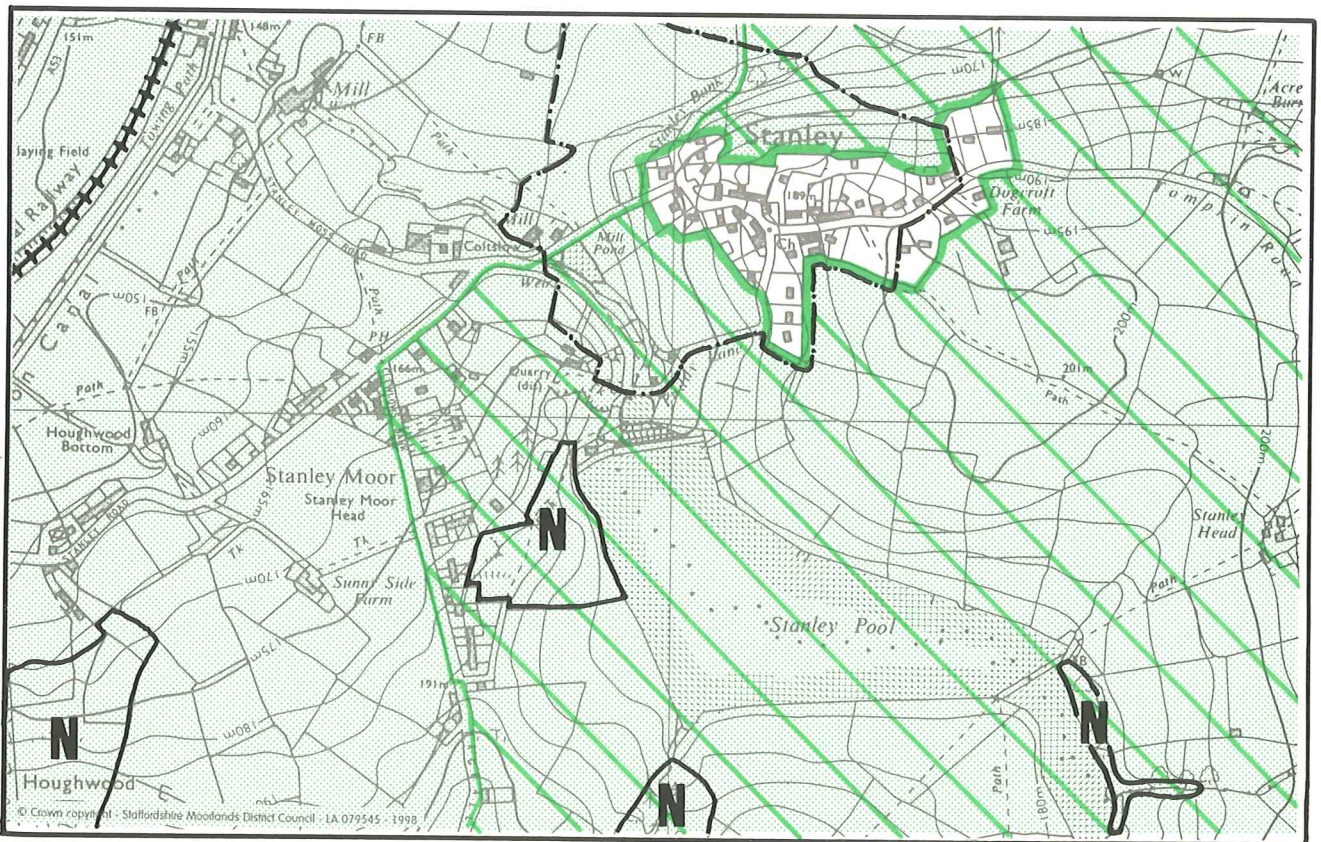
Kingsley



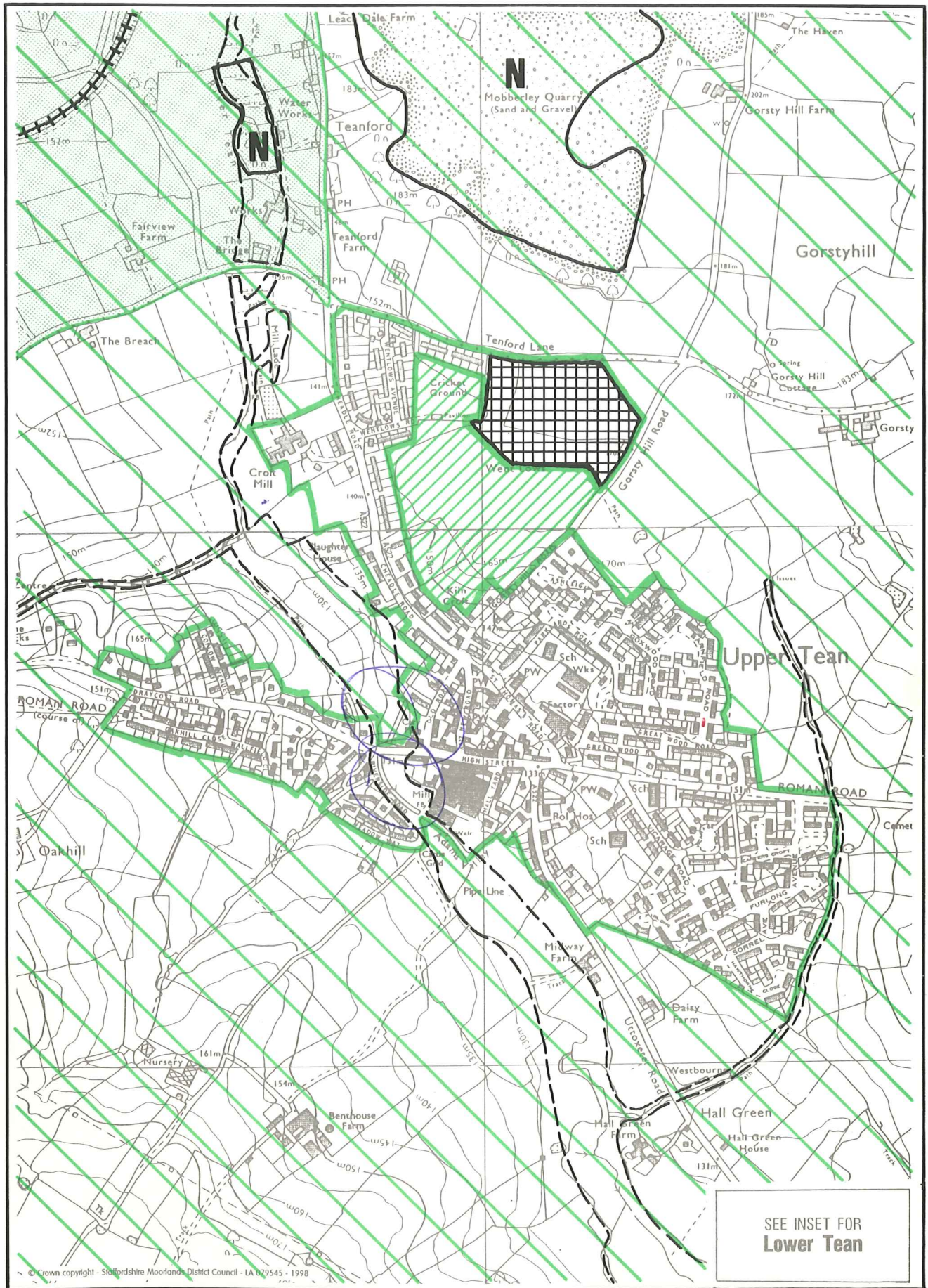
Oakamoor



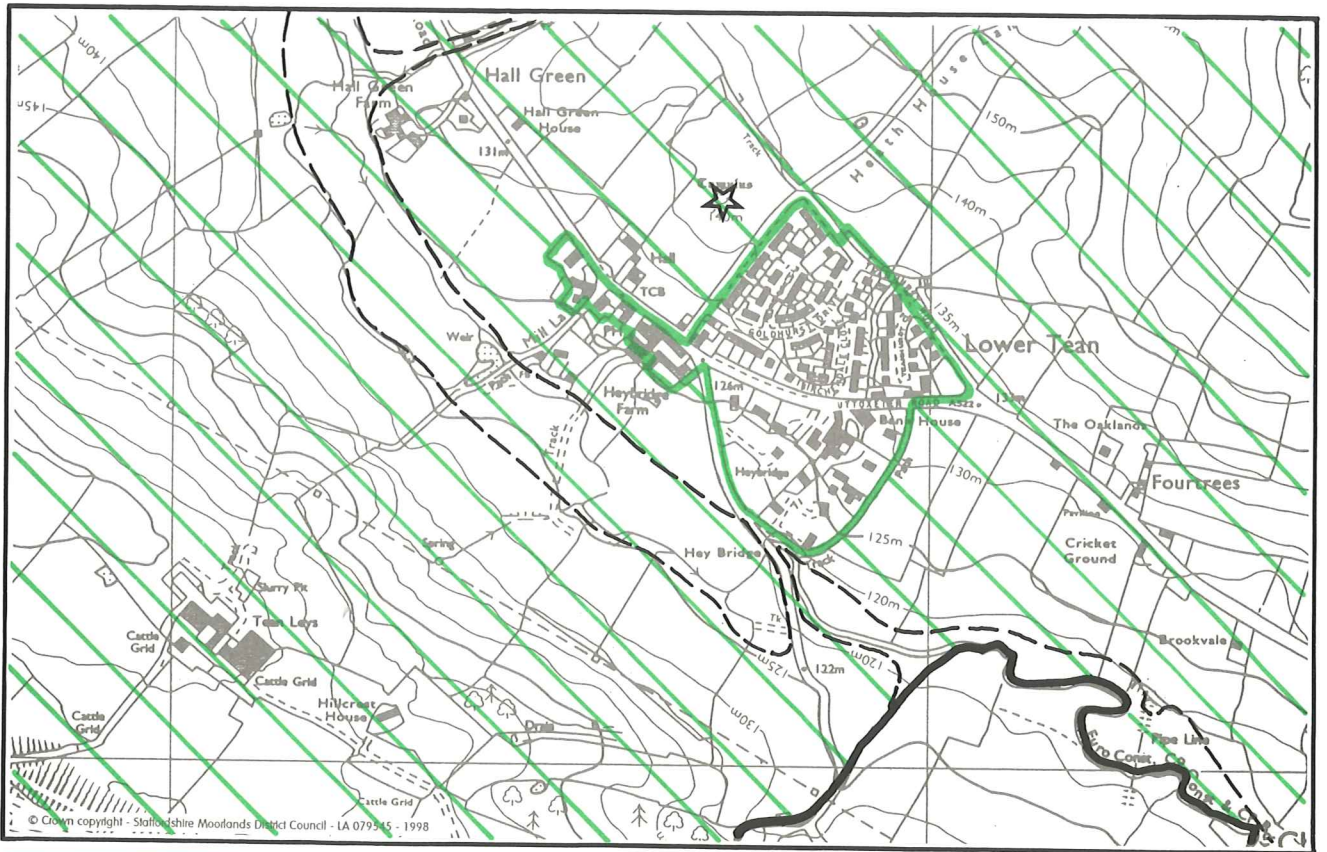
Rushton Spencer



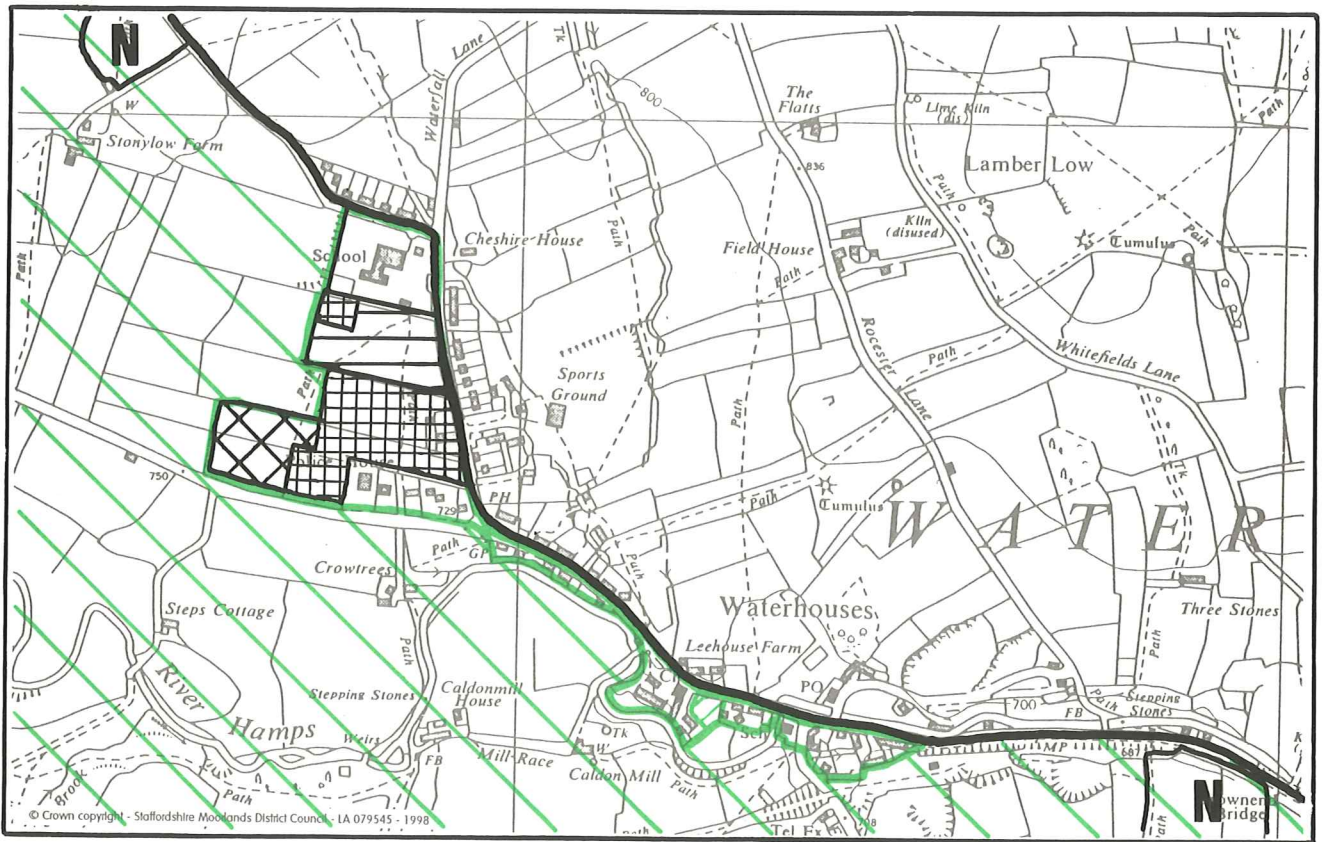
Stanley



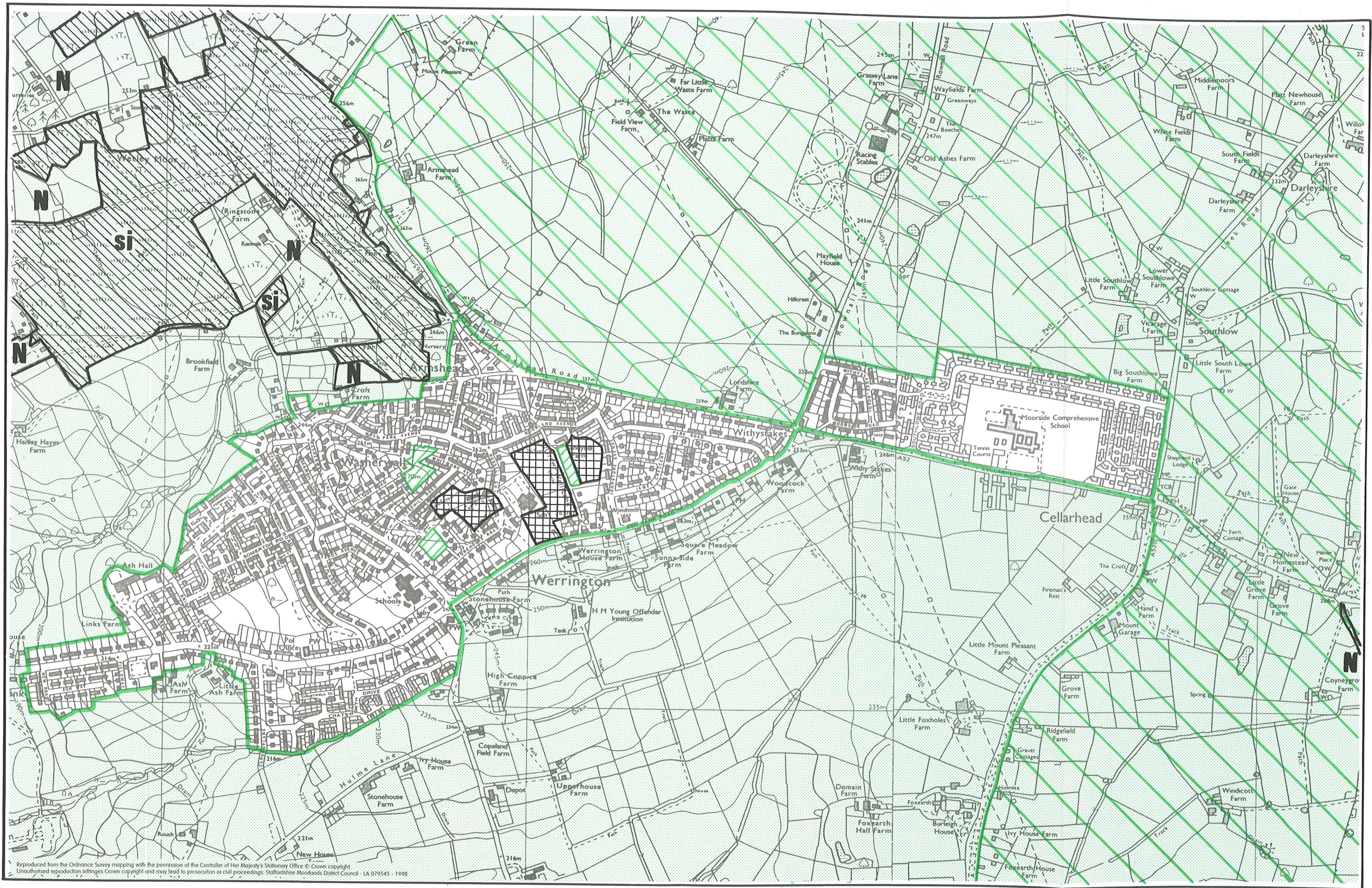
Upper Tean



Lower Tean

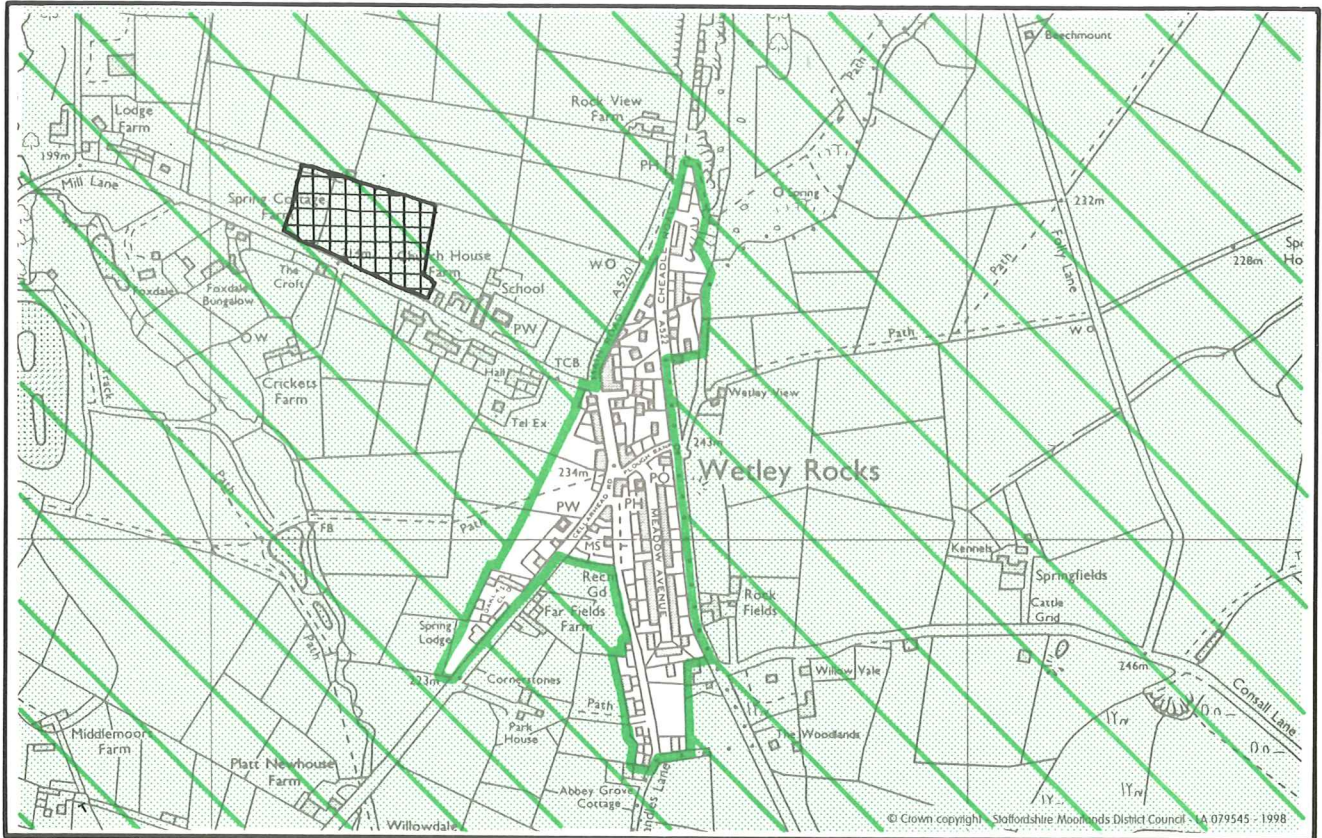


Waterhouses



Werrington and Cellarhead

STAFFORDSHIRE MOORLANDS LOCAL PLAN
 Adopted - September 1998



Wetley Rocks



Whiston