

# Welcome to Ladderedge Country Park

What to see and when

March-May woodland flowers and birds

May-August wildflowers and insects

September-November fungi and autumn colours

October-February wintering birds

Moorlands District Council and turned into a country park in 1990. The park provides a diverse range of habitats to explore and wildlife to see and enjoys stunning views over Leek and the Roaches into the Peak District.

Just 2km from Leek town centre, Ladderedge Country Park was once part of an area known as Ladderedge Common, it was then farmed before being bought by Staffordshire



## Recreation

There are three walks around the park:

**Meadow walk** - an easy 20 minute stroll around the lower meadow

**Habitat walk** - a slightly longer route that takes in all of the habitats that Ladderedge has to offer and does include a hill

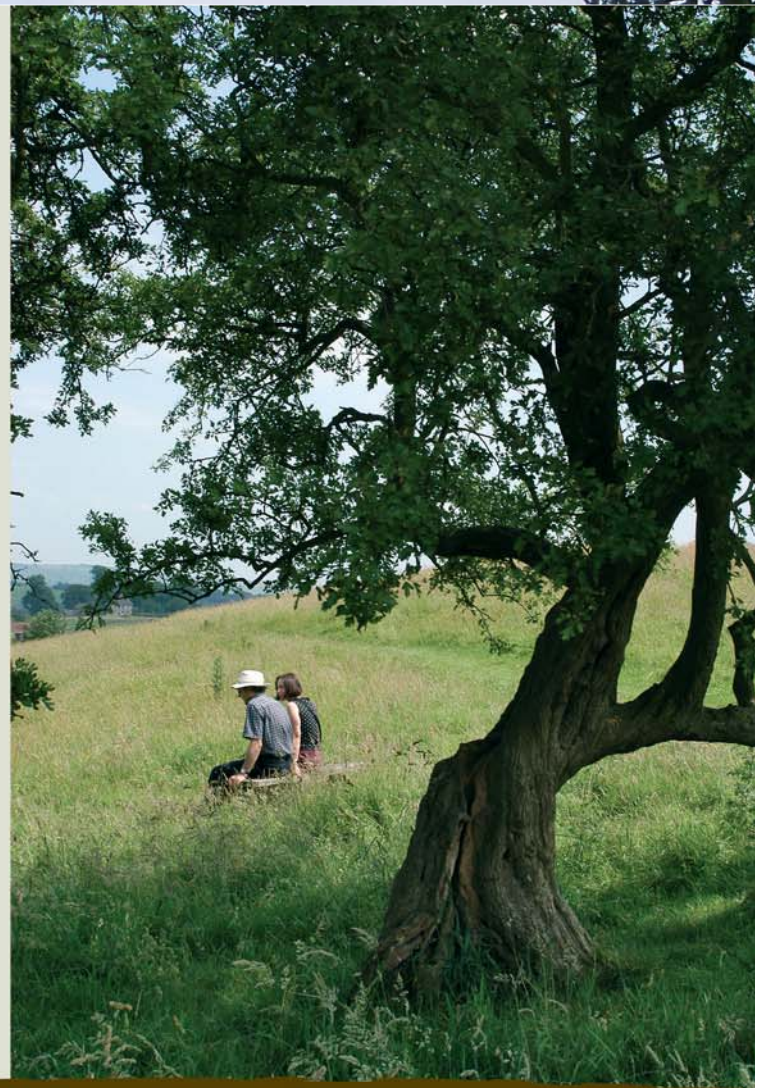
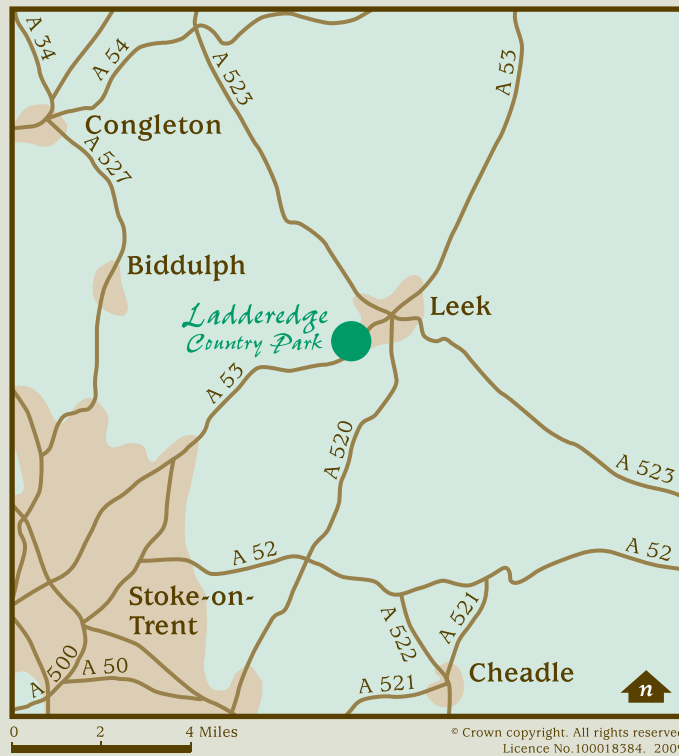
**Woodland walk** - this route takes approximately an hour and will take you along the canal feeder and up through the ancient woodland before strolling through grasslands

Three longer self-guided walks: The Longsdon Walk, Leek Landscapes and The Canal Walk link the park with the surrounding countryside.

Walks leaflets and orienteering packs can be purchased from Leek TIC and Ladderedge News & Stores. The walks leaflet can also be downloaded from the website [www.staffsmoorlands.gov.uk/countryside](http://www.staffsmoorlands.gov.uk/countryside).

## Directions

Ladderedge Country Park is fifteen minutes walk from the town centre. Accessible by public transport, with bus routes 18 & 118 stopping close by.



The Country Park also offers orienteering courses, to test your map reading skills. There are three levels, suitable for individuals, families and groups.



STAFFORDSHIRE  
**moorlands**  
DISTRICT COUNCIL  
ACHIEVING EXCELLENCE



For more information on this and other sites please contact:  
Parks & Countryside Service,  
Staffordshire Moorlands District Council, Moorlands House,  
Stockwell Street, Leek, Staffordshire, ST13 6HQ  
Tel 0845 605 3010  
Contact us at [www.staffsmoorlands.gov.uk/contact](http://www.staffsmoorlands.gov.uk/contact)  
[www.staffsmoorlands.gov.uk/countryside](http://www.staffsmoorlands.gov.uk/countryside)  
P0052/2000

## Ladderedge Country Park, Leek

Discover 28 ha of fields,  
wood and wetland

STAFFORDSHIRE  
**moorlands**  
DISTRICT COUNCIL  
ACHIEVING EXCELLENCE



# Grasslands

The meadows and pastures are managed in the traditional manner to encourage the growth of wildflowers. The meadows are mown for hay in late July/August and the pastures are grazed from the end of May. In May the Knoll is covered in a mass of buttercups, while Top meadow is at its best June to August when yellow rattle and knapweed are in flower. They are home to many invertebrates, including butterflies and small mammals. In the autumn take a close look at the grass where you will find delicate fungi growing.



# Wetland

The ponds are home to frogs and two species of newts, they then attract herons for a spot of fishing. Look out for a flash of colour as the kingfishers fly along the canal feeder and the River Churnet. During the spring the marsh and stream put on a spectacular show of marsh marigold, followed by ragged robin and yellow flag iris.

# Woodland

The mature woodland is part of Longsdon Wood, which is of ancient origin. In the spring the floor is carpeted in flowers, in particular bluebells and wood sorrel. Notice that dead wood and brash are left; these provide homes for invertebrates and small mammals. The wood is alive with birds, including greater spotted woodpecker. The winter is a good time to spot birds while they are busy feeding on the seeds and berries and there are no leaves on the trees.



- Meadow walk** 20 mins easy
- Habitat walk** 40 mins some hills
- Woodland walk** 1 hr some hills

## Barnfield

Once part of extensive wet meadow known as The Washlands. This smaller section of the park provides opportunity to enjoy a stroll along the meandering River Churnet or a picnic amongst the wildflowers. The aqueduct no longer takes the canal into the centre of Leek, but does provide access to the Caldron Canal and surrounding footpaths.

- woodland / hedgerow
- pond / stream
- entrance point
- unsurfaced path
- surfaced path
- picnic table
- seat
- bridge
- information panel

Scale in metres  
0 100 200

This map is reproduced from Ordnance Survey material with the permission of Ordnance Survey on behalf of the Controller of Her Majesty's Stationery Office. © Crown copyright. Unauthorised reproduction infringes Crown copyright and may lead to prosecution or civil proceedings. Licence No. 100018394. 2009.